

# Low Profile Roof Vent Range

For tiled or metal roofs

Partner Pacific has developed an innovative, patented range of low profile roof vents to suit both tiled and metal roofs. They have a stylish look, are extremely durable and can be used for multiple purposes. A range of colours – plus a paintable version – ensures that they will blend into the roof. Low profile roof vents are a great alternative to traditional roof cowls which require a steel pipe and roof flashing – as they are effectively 3 products in one. They are also an alternative to rotary vents for ventilation of the roof cavity.

## Key Features

- + Easy and fast installation
- + Unique patented design
- + Unobtrusive – can even install under solar panels
- + All metal construction
- + BAL-40 compliant
- + Multiple colours
- + Multi-purpose
- + Ideal for NCC Condensation Management compliance
- + For tiled and metal roofs



## Available Colours



Monument®, Surfmist®, Night Sky®, Dune®, Woodland Grey®, Basalt® and Jasper® are registered trademarks of Bluescope Steel Limited. Dover White™ and Shale Grey™ is a trademark of Bluescope Steel Limited.

\*Due in February 2025

## Product Details and Specifications

**Base Construction:** 580 x 600mm powder coated alum base (0.6mm thickness)

**Dome Construction:** Powder coated stainless steel (0.6mm thickness)

**Design:** Aerodynamic design to resist rain and wind. The curved and overhanging top protects from wind and rain penetration along with internal deflector which protects from water entering the circular opening in the base

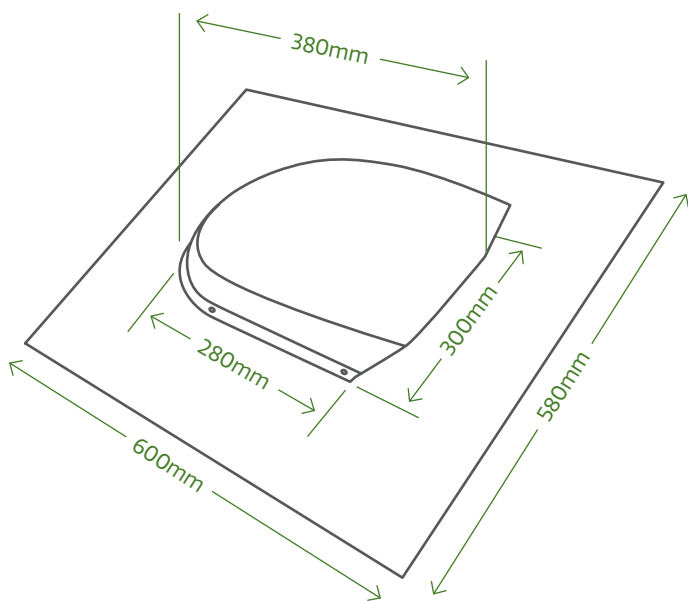
**Installation strap:** Hidden tile installation strap secures the vent to a roof batten to protect from high winds (use tile installation strap only for tiled roofs)

**Duct Adapter:** Adapter twist locks into base for easy attachment of ducting (semi rigid or flexible foil)

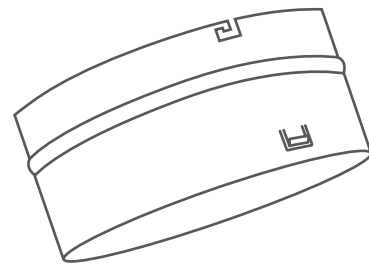
**Finish:** Coloured finishes are powder coated with UV stabilised materials. Paintable versions are ready for painting

**Open Area:** 29,040 mm<sup>2</sup>

### Specifications

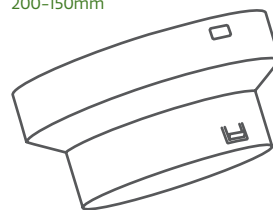


### 200mm Neck

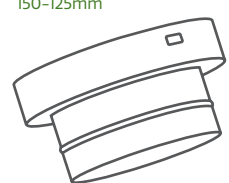


### Adapters

200-150mm



150-125mm



## Potential Applications

- + The range can be used in conjunction with ducting to vent out exhaust fans and rangehoods or to vent out the roof space
  - + 2022 NCC 10.8.2 applications – with ducting to vent out fans and rangehoods via the roof\*
- \*Potentially multiple exhaust fans can be vented via a single roof vent using a Y piece adapter to reduce the number of roof penetrations

## Features and Benefits

- + **Low profile design** – unobtrusive and can be positioned under a solar panel
- + **Pliable aluminium base** – Installs like a rotary vent. Easier and faster to install than traditional cowl, pipe and flashing
- + **All metal** – stainless steel and aluminium construction for maximum durability and longevity
- + **2mm aperture steel mesh** – compliant with AS3959 for bush fire zones up to BAL-40 – plus keeps pests and rodents out of the building
- + **Versatile base** – compatible with both tiled and metal roofs (min 10 degree pitch)
- + **Unique patented design** – aerodynamic styling resists rain and wind (#2021107277)
- + **Multi-purpose** – can be used with ducting to vents fans and rangehoods or to vent out the roof space
- + **Static** – no moving parts means no noise, damage or maintenance
- + **Colour options** – available in a variety of popular colours or a paintable finish
- + May be used as either an air intake or exhaust vent

Code	Description	Colour	Barcode Number
RV568MM	Alpine Ventilation125/150/200mm Low Profile Roof Vent	Monument®	9 350571 003490
RV568SG	Alpine Ventilation125/150/200mm Low Profile Roof Vent	Shale Grey™	9 350571 003520
RV568SM	Alpine Ventilation125/150/200mm Low Profile Roof Vent	Surfmist®	9 350571 003513
RV568NS	Alpine Ventilation125/150/200mm Low Profile Roof Vent	Night Sky®	9 350571 003506
RV568DW	Alpine Ventilation125/150/200mm Low Profile Roof Vent	Dover White™	9 350571 003582
RV568DN	Alpine Ventilation125/150/200mm Low Profile Roof Vent	Dune®	9 350571 003599
RV568WG	Alpine Ventilation125/150/200mm Low Profile Roof Vent	Woodland Grey®	9 350571 003605
RV568BS	Alpine Ventilation125/150/200mm Low Profile Roof Vent	Basalt®	9 350571 003575
RV568JP	Alpine Ventilation125/150/200mm Low Profile Roof Vent	Jasper®	9 350571 003711
RV568P	Alpine Ventilation125/150/200mm Low Profile Roof Vent	Raw Finish	9 350571 003537

Monument®, Surfmist®, Night Sky®, Dune®, Woodland Grey®, Basalt® and Jasper® are registered trademarks of Bluescope Steel Limited.  
Dover White™ and Shale Grey™ is a trademark of Bluescope Steel Limited.

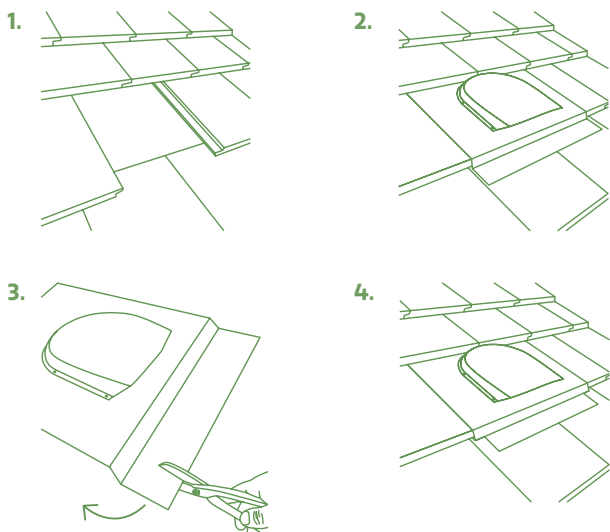
## Installation Instructions

### Tile Roof

1. Select the desired position along the ridge capping for the vent.
2. Remove a tile from the third row down from the ridge capping (or lower). \* Ensure that the proposed position is between roof rafters. (fig 1)
3. Cut any permeable membrane in a cross and fold back to leave room for neck and access to tile installation strap.
4. Remove the components from the carton.
5. Push the base under the tiles above the opening created in the roof. Centre the hole in the vent base over the opening. Bend the top end of the base up to meet the underside of the tiles above. Dress the base into the shape of the tiles. Bend the bottom edge of the flashing down to seal against lower tiles. (fig 2)
6. (Optional but recommended.) Make 2 vertical cuts in the vent base approx. 50mm in from the bottom left and bottom right corners, forming 2 strips. Bend the 2 strips down each side under the tiles to assist in securing the vent. Silicone may be used under the sides and front of the base. (fig 3 & 4)
7. From inside the roof, attach the tile installation strap to a timber tile batten or rafter on the lower side of the hole, using a nail or screw (not included).
8.
  - a. For 200mm applications, select the 200mm neck.
  - b. For 150mm applications, connect the 200-150mm adapter to the 200mm neck.
  - c. For 125mm applications, connect the 150-125mm adapter to the 200-150mm adapter and this adapter to the 200mm neck.
9. Push in and twist neck (with adapter/s) into the vent opening. Tape permeable membrane to neck.
10. Attach duct to the neck or adapter with a worm drive clamp or duct tape.
11. Reattach and seal permeable membrane to the neck or adapter with an appropriate tape.

\* The removal of a tile higher than this may damage the integrity of the ridge tiles and is not recommended.

**These items may be required:** Knife (to cut sarking/insulation) + Tin snips (for cutting base) + Silicone sealant (for base) + Nail and hammer OR screw and screwdriver (to attach tile installation strap) + Duct tape or worm drive clamp (to attach ducting).



### Metal Roof

1. Select the desired position along ridge capping for the vent.
2. Remove the components from the carton.
3. Remove the tile installation strap with tin snips prior to installation (Strap is not required for metal roofs).
4. Place the vent in position with top edge of the base slid under the ridge capping. Ensure that the vent base covers the corrugations or ribs equally and the desired roof penetration position is between the roof rafters. (fig. 1)
5. Mark a circle of approximately 200mm diameter using the neck as a template. (fig. 2)
6. Cut circular hole in roof and cut permeable membrane in a cross pattern (if present).
7.
  - a. For 200mm applications, select the 200mm neck.
  - b. For 150mm applications, connect the 200-150mm adapter to the 200mm neck.
  - c. For 125mm applications, connect the 150-125mm adapter to the 200-150mm adapter and this adapter to the 200mm neck.
8. Push in and twist neck (with adapter/s if applicable) into the vent opening of the vent to clip into place.
9. Place vent back into position under capping with neck penetrating hole. Tape permeable membrane to neck.
10. Using tin snips, cut the bottom edge of the base in the shape of the corrugations and bend down at front. (fig 3.)
11. Bend base down at the sides of the corrugations.
12. Secure the base with self-tapping screws. We recommend 3 screws down each side and one on every second ridge of the corrugation. Approximately 9 are required (not included). (fig 4.)
13. Attach ducting to the neck or adapter with a worm drive clamp and/or duct tape.
14. Reattach and seal permeable membrane to the neck or adapter with an appropriate tape.

**These items may be required:** + Pen (for marking hole) + Drill or screwdriver + Tin snips (for removing tile installation strap and trimming base) + Knife (for cutting insulation/sarking) + Saw (for making roof penetration) + Tape (to seal roof penetration) + Self-tapping screws (to secure vent) + Duct tape or worm drive clamp (to attach ducting)

