



ECO POWER SAVINGS



HIGH AIR FLOW



BALL BEARING MOTOR



LOW NOISE OUTPUT

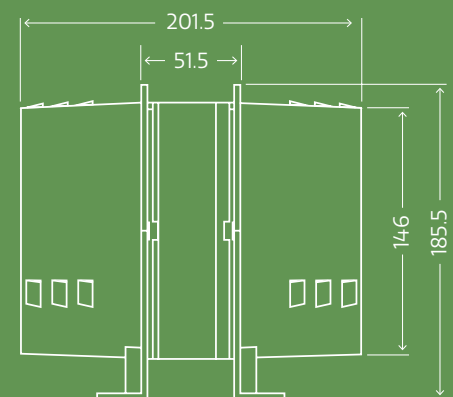
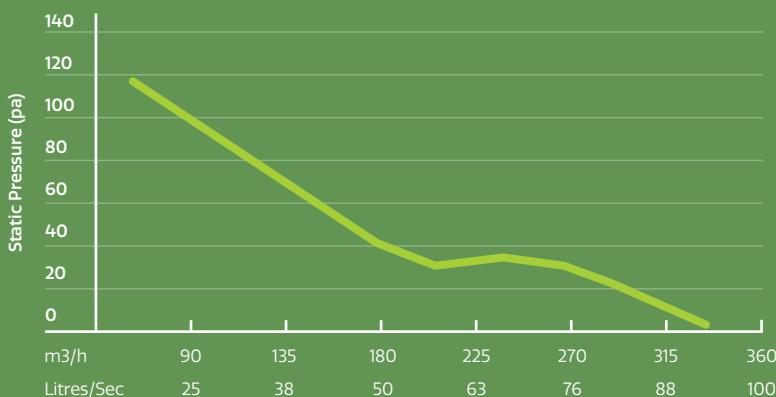
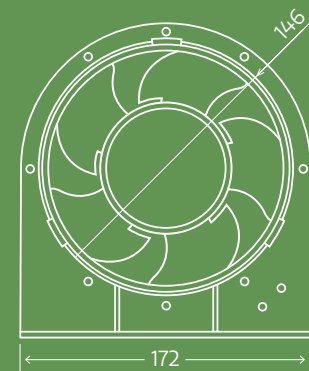
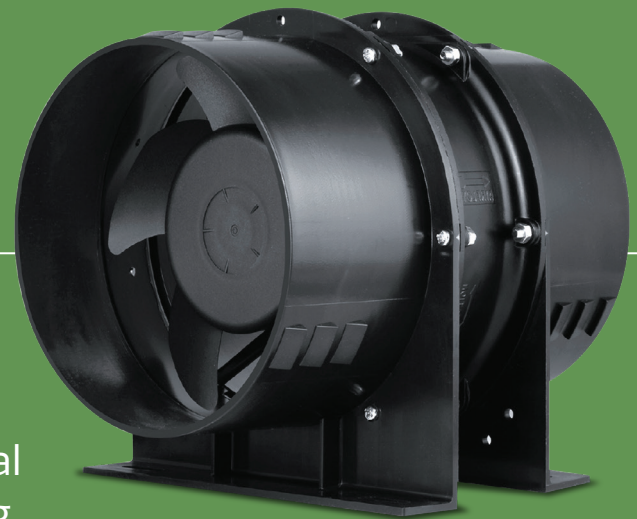
# Inline Axial Fan

## 150mm Taurus Series

100mm, 200mm and 250mm models also available.

The Taurus series of duct mounted axial fans is ideal for exhausting or supplying air application to bathrooms, ensuites and laundries.

- + Powerful airflow and high efficient performance
- + Quiet operation
- + Lightweight and practical spigots for fast duct attachment
- + Dual ball bearing and power saving eco motor
- + Rated to 50,000 hours continuous run time
- + 3 year warranty
- + IP22 Rated



Code	Type	Air Flow	Watt	Input	Duct Size
ACF150	AC Fan	92 L/S. 330m3/h	46W	240V-50Hz	150mm