

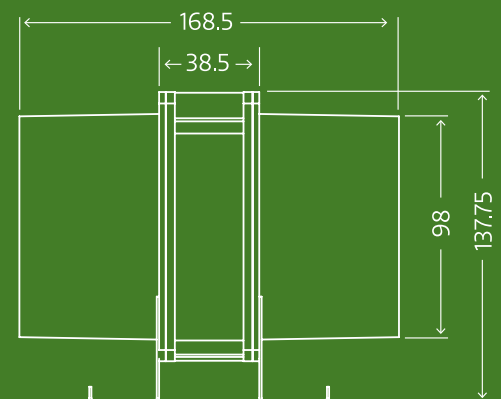
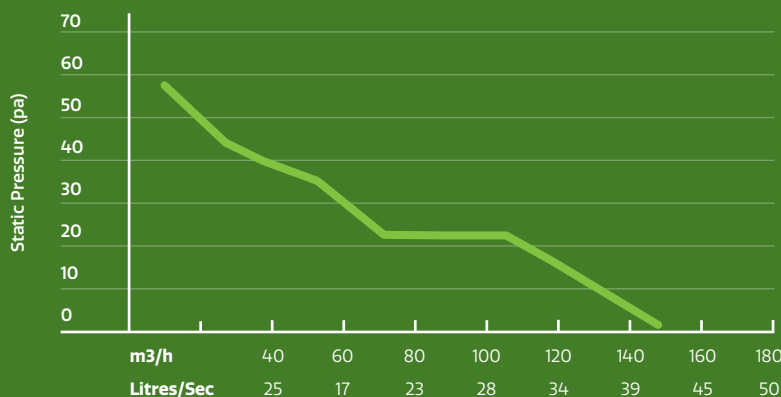
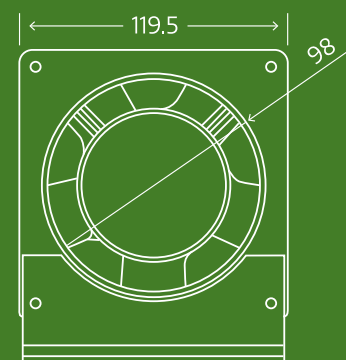
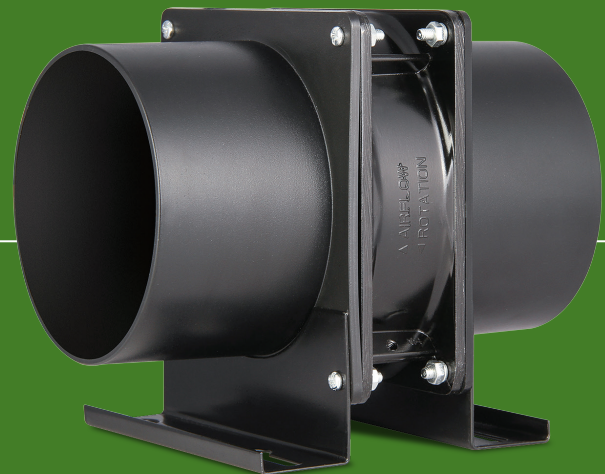
# Inline Axial Fan

## 100mm

150mm and 200mm models also available.

Powerful airflow ideal for exhausting bathrooms, toilets, laundries, room to room air transfer or venting sub floors and roofs.

- + Quiet operation
- + Increases healthy fresh air circulation
- + High performance (149m<sup>3</sup>/h), energy efficient motor
- + Easy fix mounting and duct tabs to secure duct
- + Rated to 50,000 hours continuous run time
- + Quality fan motor with Japanese bearings and copper wiring
- + Compliant with 2022 NCC 10.8.2 (1) flow rate requirements



Code	Type	Air Flow	Watt	Input	Duct Size
ACF100	AC Fan	41 L/S. 149 m <sup>3</sup> /h	26W	240V-50Hz	100mm